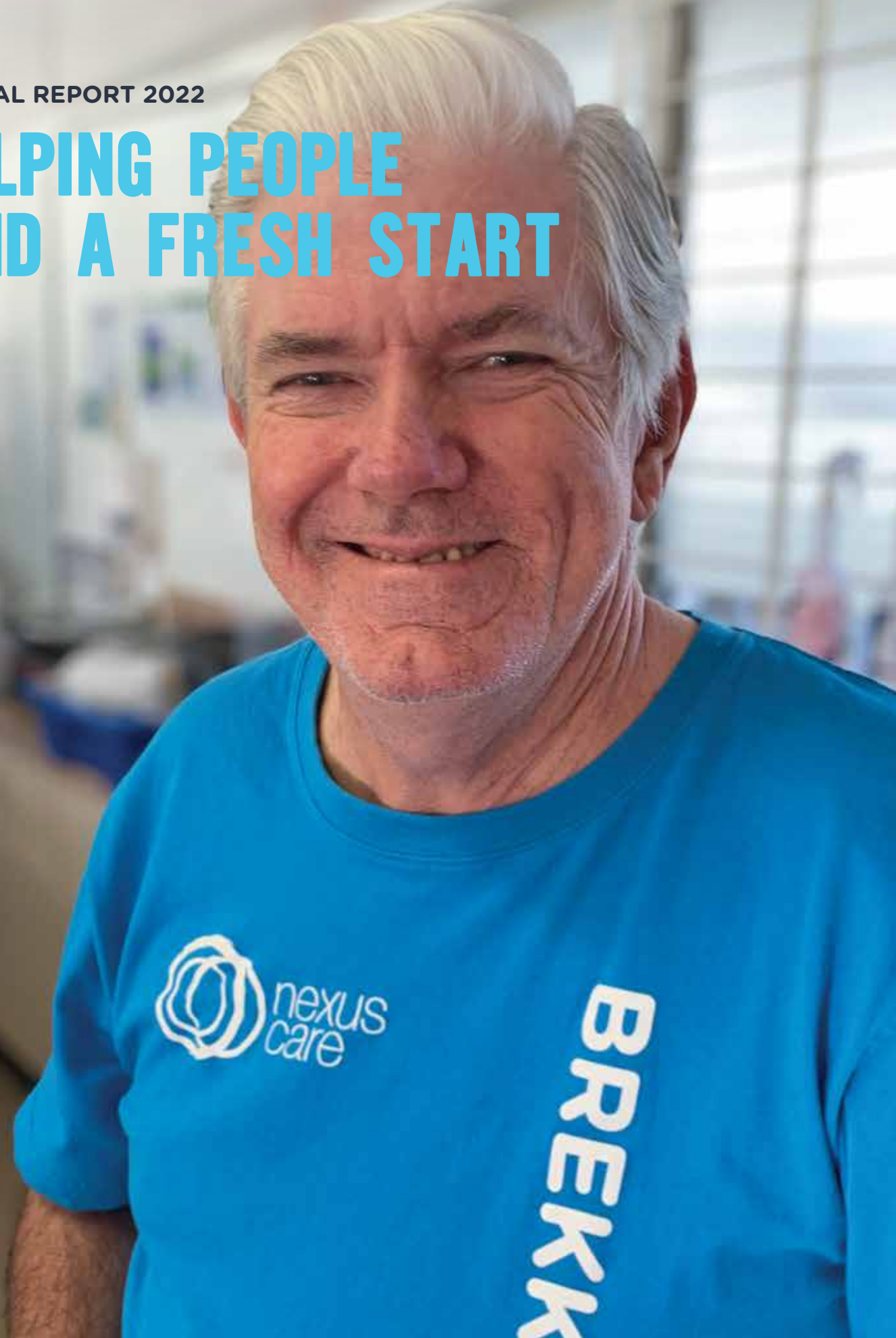




ANNUAL REPORT 2022

HELPING PEOPLE FIND A FRESH START



OUR MISSION

HELPING PEOPLE TO FIND A FRESH START

Nexus Care exists to relieve poverty and distress for children, families and individuals through holistic, people-focused and evidence-based services.

Our high quality programs include food relief and education services, emergency financial support, school breakfast programs, Career Coaching and Extra-Care initiatives primarily within our greater North-Brisbane area.

WHAT AN HONOUR

What an honour to come alongside and help so many people who've unexpectedly hit hardship this year.

This Annual Report again shows the growth of Nexus Care in adapting to meet local need with radical, practical, essential generosity. Beyond the stats and achievements you'll read here, we remain fixed on the value of each person and empowering their story. These relationships are precious to us and distinguish us in support services.

Thank you to our amazing staff, volunteers, supporters and donors for going above and beyond to share love in action.

Josh Plumb, Executive Manager



CONTENTS



OUR MISSION

From our President 3

Local Hardship in Brisbane 4-5

FROM STRENGTH TO STRENGTH

Growth Over the Years 6-8

2022 Highlights 10-11

New Sandgate Location 12-14

PROGRAMS OVERVIEW

Fresh Start Food Program 15

Food Parcels 16

School Brekky Program 17

Emergency Financial Relief 19

Career Coaching Services 20

Client Testimonials 21

TOGETHER WE CAN

Volunteers 22

Fundraising & Appeals 24

Leadership & Members 26

Staff & Supporters 27



FROM OUR PRESIDENT

PEOPLE MATTER MOST

NATHAN BEAN



Our heartbeat is that every person coming through the doors at Nexus Care experiences acceptance, dignity and generous practical support through the kindness and compassion of our people and programs. This is why I am so passionate about Nexus Care's work.

When Nexus Care began in 2011, the need was right on our doorstep and there was little to no support services in our North-Brisbane corridor; nearby large suburbs such as Stafford, Chermside and Keperra reported increased poverty levels yet a distinct lack of any essential support services nearby. Nexus Church pioneered a charity to stand in that gap and Nexus Care's Fresh Start Food Program (FSFP) was launched.

Having opened in a second location at Sandgate in May 2022, we now have two growing hubs and celebrate many more successful support programs occurring weekly, with a modest estimation of feeding over 19,000 people since we opened. A hallmark of Nexus Care is our continued adaptability to genuinely meet hardship with hope. This came to the fore once again as the impacts of the Brisbane floods were felt by many in 2022. I am so proud that we not only provided excellent food relief but lifted our support and reach to the community throughout this time.

All of this continues to be possible only because of the generosity of donors, the dedicated team of staff, volunteers and suppliers and the support of many Nexus Church congregation members that join us in our mission.

As you read this Annual Report, I trust you'll see that our heart is far more than just providing high-quality support programs. For us, it's also about seeing each individual through eyes of compassion and gently lifting their head to help them see that they too can find a fresh start.

Blessings,

Ps Nathan Bean, President



HARDSHIP IN BRISBANE

WHAT WE KNOW ABOUT HARDSHIP IN OUR LOCAL COMMUNITY

People are Hungry

3.31 million Aussies live in poverty, a staggering 22.9% of these are children.

21% of Australian Households have experienced severe food insecurity in the last 12 months[^]

Devastatingly, 1.3 million Australian children are experiencing food insecurity, sometimes going a whole day without food[^]

Poverty Affects Mental Health

More than 1 in 3 Aussies struggling with food insecurity feel: tired for no good reason, that everything is an effort and depressed[^]

33% of Australians say their mental health has improved as a result of receiving support[^]

The Nearby Need

These Brisbane suburbs were the top localities to access Nexus Care in 2022.

1. Chermside - 548 parcels
2. Stafford - 395 parcels
3. Stafford Heights - 377 parcels
4. Everton Park - 262 parcels
5. Zillmere - 251 parcels
6. Sandgate - 224 parcels

Statistics sourced from [^]Foodbank Hunger Report 2022 & *ACOSS Poverty in Australia: A Snapshot 2022

OUR MISSION

THE NEGATIVE IMPACTS OF POVERTY DISADVANTAGE ALL AREAS OF LIFE - PHYSICAL, SOCIAL AND EMOTIONAL. THESE ARE INCREDIBLY REAL AND DIFFICULT TO BREAK.

People who are most at risk of poverty are likely to be those who are:

- On low income
- Unemployed
- Single and live alone
- Live in a one parent family
- Rent
- Have low savings
- Have transportation difficulties

Other known vulnerable groups include young people, people from Aboriginal and Torres Strait Islander backgrounds and refugees.



**YOU CAN MANAGE WITHOUT MOST OTHER THINGS
BUT WHEN YOU'RE
DESPERATE FOR FOOD
IT'S A WHOLE OTHER THING.**

-CLIENT

GROWTH OVER THE YEARS

2010

A six month strategic review of community need was conducted forming the basis from which Nexus Care programs would be developed.

2011

Nexus Care was launched just in time to provide a massive flood relief effort for people affected by the 2011 Brisbane flood disaster. Nexus Care's innovative flagship program, the Fresh Start Food Program, was launched helping 40 households a month with nutritious food parcels and educational resources, along with monthly cooking classes began in November. 5 school breakfast programs were run weekly. Set up of the COACH Program began with 14 mentors trained. Nexus Care hosted our first Christmas celebration with 30 people.

2012

The Fresh Start Food Program entered its second year, running 4 school breakfast programs, supporting 55 families a month with healthy food parcels and offering monthly cooking classes. Nexus Care received additional support from 2 interns and began hosting TAFE and university students. New

resources were developed and essential equipment was obtained along with new partnerships developed increasing our access to in-kind food donations. Nexus Care completed a large flood recovery project funded by RACQ, involving renovations, food parcels, and rural clean up trips.

2013

Nexus Care employed a full time Program Manager and were able to increase staffing for Fresh Start and COACH programs to meet increasing demand. Our volunteer support base also increased, with volunteers investing more than over 100 hours of time per week. Fresh Start grew from supporting 65 families monthly in January to 113 in December. Cooking classes increased to twice monthly and school breakfasts continued in 5 schools. The COACH program began to expand significantly with 12 families supported that year and additional mentors trained. Nexus Care's COACH Coordinator was accredited to deliver mentor training. Nexus Care also launched a Community Connect program to combat social isolation, holding monthly community morning teas and school

holiday programs for children identified as at risk. Nexus Care was contracted by the Multicultural Community Association to deliver food and toiletries to newly arrived asylum seekers. A large Christmas celebration was held with 110 people in attendance. Nexus Care also hosted it's first community fun run - the Fresh Startathon!

2014

At the start of 2014, Nexus Care was supporting up to 120 families monthly with the waiting list removed. We entered into a partnership with Oz Harvest to deliver the NEST cooking program. Strategic evaluations of both the Fresh Start and COACH programs were conducted with the support of QUT nutrition and public health students. Nexus Care received funding to undertake a COACH pilot study for refugee families. Through COACH we have been able to support 40 families and witness amazing lifelong transformation! Nexus Care's Community Connect programs continued to expand, hosting personal development programs and family fun days along with morning teas, school holiday programs and Christmas events.

GROWTH OVER THE YEARS

2015

Nexus Care commenced new key programs including an ER (Emergency Relief) Program partnering with the Department of Social Services, the FOODcents cooking course and the Christians Against Poverty (CAP) Money Course. We launched our 6th Breakfast Program at Lawnton State School in partnership with David Deane Real Estate at Strathpine. Strategic evaluation of our School Breakfast and COACH Programs were conducted with the support of QUT nutrition and human services students. A further 14 families were supported through our COACH program and empowered to achieve life goals. Our Community Connect Programs continued to facilitate social inclusion with school holiday programs, morning teas, Christmas events and personal development programs.

2016

Nexus Care launched our Youth COACH pilot which saw 11 coaches trained and 13 young people matched into COACH relationships. Throughout all COACH programs 40 coaches were trained and 29 families and young people entered COACH relationships. We supported 182 families each month with fresh, nutritious food parcels, a 31% increase in 2015. Our Community Connect Programs continued to develop including school holiday programs, CAP money course, a SHINE group with mums at Somerset Hills State School, morning teas,

Christmas events and more. In addition, 244 people in financial crisis received financial relief and support through our ER Program.

2017

Nexus Care has seen growth in our Fresh Start Food Program supporting 247 families with healthy nutritious food parcels each month, an increase of 28.58% in 2016. In addition, 268 people in financial crisis received financial relief and support through our ER Program. Our Community Connect Programs continued to develop with CAP Money course, morning teas, a school holiday program, Christmas events and more. Our volunteer supporter base continues to provide over 120 hours support per week and we also commenced an agreement with Crossway Life Care as State COACH Relationships Manager supporting the growth of COACH across Queensland. Our volunteer supporter base continues to provide over 140 hours support per week.

2018

Nexus Care has seen growth in our Fresh Start Food Program supporting 263 families with healthy nutritious food parcels each month, an increase of 13.56% in 2017. In addition, 272 people in financial crisis received financial relief and support through our ER Program. Along with our ongoing Community Connect Programs including morning tea, Christmas events we also piloted new initiatives including

a kids cooking class, and school based dance class along with more. Our volunteer supporter base continues to provide over 90 hours support per week and we also were successful in our tender to continue to provide Emergency Financial Relief in partnership with the Department of Social Services into 2019.

2019

In February Nexus Care supported it's 4000th family in the Fresh Start Food Program and throughout the year supported on average 323 families each month, an increase of 23% on 2018. We have enjoyed growing partnerships with organisations like Share the Dignity, The Nest Community, Local State Schools and more. New initiatives like community thank you morning teas, and a Stafford State School community dance class began. Our volunteer supporter base continues to provide over 90 hours support per week. We also launched our inaugural charity golf day with 58 participants and saw a record number of people supported over the Christmas season.

2020

Throughout 2020 we all felt the impact of COVID-19 and Nexus Care once again rose to the occasion with extra-care beyond our normal. We got to work phoning those we knew were in the vulnerable categories offering extra support including deliveries for a time, we adapted our Emergency financial assistance

GROWTH OVER THE YEARS

to take phone bookings, and as we noticed a change in the cohort of people connecting with us we tailored our support further. We piloted a new initiative called Career Coaching Clinics including Workplace English Classes. Through all of this new partnerships were formed. Additionally, we were grateful to receive extra financial provisions from the Department of Social Services for Emergency Relief programs.

2021

In February, Nexus Care was excited to officially launch its new program Career Coaching Clinics and had 68 people participate in it throughout the year. In 2021 we supported our 6000th household in the Fresh Start Program and throughout the year supported on average 266 families each month. Our Brekky Programs were back after 10 months on hold with the Pandemic. Our Financial Emergency Relief program and initiatives like the 'Refresh Morning Tea' for women, Somerset Hills community dance classes, and therapeutic art classes continued strong. In addition to our ongoing community partnerships we also enjoyed many new community partnerships with organisations like North West Hospital, Coles Ferny Grove, Woolworths Everton park, OSCH Stafford State School, Retail First Shopping Centres and others. Our volunteer supporter base continues to provide over 70 hours of

support per week and our main fundraising events, from EOFY Appeal, to our Christmas Appeal, and Annual Charity Golf Day were a great success.

2022

In May Nexus Care was delighted to open a second location at Sandgate! We again hit some major milestones; Career Coaching Clinics exceeded 100 people championed through the program since it was established in October 2020. Our Extra Care initiatives were elevated by the addition of 'Chappy Chats', Therapeutic Art Classes running each term at our new Sandgate hub, and community gathering opportunities across the year including international guests meals and morning teas. Our Financial Emergency Relief program supported a total of 343 people. Each month, there was an average of 333 families receiving support through our Fresh Start Food Program and during the year, we supported our 7000th household through the program. Our Brekky Programs were finally back, after a pandemic-induced hiatus. Our existing community partnerships continued strongly alongside many new community partnerships and corporate sponsorship development. Once again, our 3 foundational fundraising events (namely our EOFY Appeal, Christmas Appeal and 4th Annual Charity Golf Day) were a great success, helped made possible by our committed volunteer

supporter base who provide over 90 hours of invaluable support weekly.



Our new Sandgate location was possible because of generous donors and the community at Nexus Church Sandgate.

THE YEAR AT A GLANCE

January

Nexus Care was quickly back in business in January, supporting families with fresh food during the post Christmas and back to school period. With part of the funds raised through our 2021 Christmas Appeal we were able to provide support to families (70 children) struggling with back to school costs through both our Everton Park and Sandgate hubs.

February

In February, Career Coaching Services (CC Services) were back in full swing, supporting guests towards employment and education goals. With the school term starting we launched our 2022 Breakfast Programs in Everton Park High, Somerset Hills State School, and Everton Park State School. Community Chaplain Chats launched with two chaplains available weekly to offer pastoral care and a listening ear to people in tough situations.

March

With the Brisbane floods that occurred in March we were able to quickly respond by mobilising volunteers and expanding our existing financial relief to support people needing to purchase replacement household items and bills towards flood repairs. Alongside our core programs we also commenced 'Job Club' as part of CC Services.

April

In April we surpassed 100 people supported through Career Coaching since beginning October 2020. We were able to assist 243 families with healthy food parcels, of which 54 were first time participants. Additionally, 28 people were assisted through our Financial Emergency Relief Program.

May

On May 5th Nexus Care Sandgate opened its doors, providing increased access to both our Food Relief Program and Emergency Financial Relief. Across both sites we were able to provide 463 individual moments of support during the month. Additionally, we supported Somerset Hills Under 8's day by providing muesli bars and fruit for 170 students.

June

In June, we held a Morning Tea to help shape community and connection with 8 ladies who have connected with our chaplains. Over the month, 39 guests were supported by CC Services and since the start of the year, 25 guests had participated in Workplace English Classes. Our EOFY Appeal launched and was once again a great success thanks to the generosity expressed by many. THANK YOU!

July

Our Sandgate location officially handed out their one hundredth food parcel since opening and in the month of July, supported 47 households. Our core programs continued to support those doing it tough. We continued to be grateful for our community partners including OzHarvest who provided 'Cooking For A Cause' Brekky meals to our School Brekky Programs.

August

By now we had provided over 30.8 tonnes of healthy food to our local community in 2022. August saw us assist 373 households with healthy food parcels, and 28 people with financial emergency relief. Our Sandgate office expanded their open hours increasing availability. Our third term of Therapeutic Art

2022 HIGHLIGHTS

Classes came to a close with such positive feedback and stories of impact.

September

In addition to our core programs, we were also excited to see our 4th Annual Charity Golf Day go off so well. It was held on the 16th September and was a huge success. Thanks to the 86 players, 5 sponsors and the team of 10 staff/volunteers that helped to raise awareness and funds for the work of Nexus Care. Additionally, 26 staff and volunteers joined together for Sharing Hope in Crisis training. The night was delivered by Stewart Bevrige, State Coordinator and Chaplain with the 'Billy Graham Rapid Response Team'.

October

Our core programs continued running strongly, supporting over 422 households with a combined 575 individual moments of support across all our initiatives. In October we attended and contributed to the Brisbane North Financial Inclusion Expo and Forum put on by Brisbane City Council. Our Nexus Care Brekky Club partnered with EPSHS to promote Queensland Mental Health week as well. Additionally, we hosted a hardworking team from Queensland Investment Company for a corporate volunteering morning.

November

As our core programs began to ramp up towards Christmas we were grateful to receive some wonderful grocery donations from Next Steps Kindy - Everton Park, St Kieran's Primary School Brighton, Woolworths Everton Park, Woolies Skygate, and the Brisbane PA Network. Additionally, we launched our Annual Christmas Appeal which raised a little over \$35,260 for our Christmas and Back to School initiatives, by the end of December.

December

December is one of our biggest months. Nexus Care distributed 649 healthy food parcels and 750 Christmas Hampers in the

lead up to Christmas - that's over 50% more than 2021! We loved having many new volunteers join us in our one-off experience opportunities including our hamper packing parties. Additionally, we had 7 new organisations donate non-perishable items to our food program for Christmas. We were delighted to partner with Prison Fellowship's Angel Tree Program, providing gifts to 13 local children with a parent in prison. The Career Coaching Services end of year event had over 50 participants attend.



NEXUS CARE OPENED A SECOND LOCATION ON 5 MAY 2022

We have always worked hard at adapting to meet local need with radical practical generosity. In this spirit, a decade after we started at Everton Park, the question of a second location at Sandgate was raised.

As we consulted the community and assessed the need, we found that outside the inner city area, the Sandgate region in fact had the largest proportion of people experiencing homelessness on Brisbane's northside (ABS, Census, 2016). We also heard from experienced community organisations like SANDBAG about the need for what Nexus Care provides to be more accessible.

Expanding to Sandgate gained momentum as the Nexus Church Sandgate community began to establish and soon it became a shared heartbeat to benefit the community.

So on May 5th, 2022, after much hard work by many people, the doors of Nexus Care Sandgate opened.

We began with and continue to offer our core relief services (Fresh Start Food Program and Emergency Financial Relief) and to listen to and learn about the Sandgate community. From there into 2023, we are further tailoring our support in ways that will compliment the great community work already being done in Sandgate and the surrounding region.

EXPANDING TO SANDGATE



580 Food Parcels provided

304

HOUSEHOLDS SUPPORTED

We began by supporting 30 households in May & finished the year by helping 129 households for the month of December

+

883 MOMENTS OF SUPPORT

An illustration of a carton of milk with a small 'M' on it and an apple next to it.

8.12 TONNES OF HEALTHY FOOD PROVIDED



610 Volunteer Hours



October saw the first Therapeutic Art Class run at Nexus Care Sandgate



A CLIENT FROM OUR SANDGATE LOCATION CAME IN TODAY & SAID
“YOU SAVED MY LIFE
I WOULD NOT KNOW WHERE I’D BE
IF NOT FOR NEXUS CARE”

-NEXUS CARE STAFF MEMBER ○



FRESH START FOOD PROGRAM



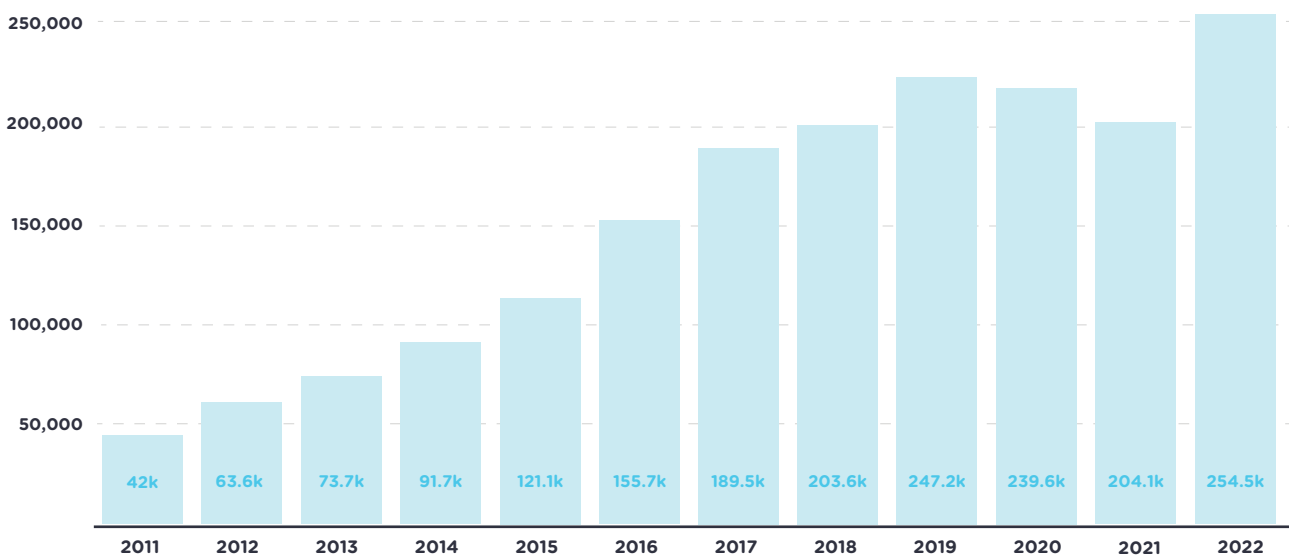
WE BELIEVE THAT ANYONE IN HARDSHIP SHOULD HAVE ACCESS TO GOOD, HEALTHY FOOD

Food is not only fundamental to our wellbeing, but plays a key role in how we connect and belong in our community. Where there is not enough to eat, the impact can affect many areas of a person's life.

The Fresh Start Food Program (FSFP) was created by a qualified nutritionist and is the

flagship program of Nexus Care. The program offers immediate food relief to those experiencing hardship, provides education to empower people with knowledge and skills to support their family, and coordinates various local school breakfast programs.

MEALS PROVIDED BY OUR FSFP*



*Combined total of meals provided through our Fresh Start Food Program (FSFP) including food parcels & brekky clubs.
Note: 2021 saw a drop in food parcel demand partly due to additional government support for Australian residents, which helped ease household financial pressure. But we saw a large increase in international participants.

FOOD PARCELS

MORE THAN 239,820 MEALS WERE SUPPLIED IN 2022[^]

Over the past 12 months, Nexus Care has handed out food parcels to teenagers as young as 16, older Aussies up to 90 years and everyone in between. Our team works hard to not only offer nutritious food parcels but seeks to lovingly care for each person that comes through the door.

The Fresh Start Food Parcel Program (FSFP) has grown from providing 42,000 meals in 2011 to over 239,000 in 2022. Over the years, the quality and size of our food parcels have continued to grow along with expanding wrap-around support from advocacy and referrals to involvement in our other programs and initiatives.

This would not have been possible without the amazing in-kind donations as well as our generous financial donors which allow us to purchase the necessary food items to ensure the parcels are well rounded and nutritious.

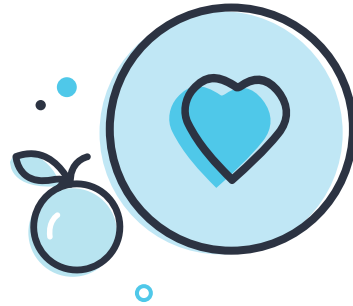
[^]based on one food parcel making the equivalent of 60 dinner plate meals.

55.95
TONNE OF HEALTHY FOOD

Equivalent
239.8K
MEALS

861
(51.4%)
first timers

LOCAL SCHOOL BREKKY CLUBS



1 IN 5 AUSSIE KIDS START THE DAY WITHOUT ACCESS TO BREAKFAST^

To help overcome this stunning statistic, Nexus Care partners with a number of great sponsors and volunteers to deliver school breakfast programs in five local Brisbane schools.

The schools we've been privileged to support in 2022 include:

- Craigslea State High,
- Somerset Hills State School,
- Everton Park State School, and
- Everton Park State High

Each program provides a range of nutritious breakfast options such as yoghurt, fruit, milo, smoothies, toast, cereal, wholemeal pancakes and toasties, all delivered in a fun and inclusive environment!

Statistics sourced from ^Foodbank Hunger Report 2021



14,700
BREKKY MEALS A YEAR



21.5 combined volunteer hours each week

FOSTERING
BELONGING

& supplying a nutritious start to the day

+





Park State High School

PLAYGROUND RULES

- Pick up all rubbish & place in bin
- Respectful and appropriate language to be used at all times
- Look to be inclusive and invite others to participate
- Build a positive reputation for yourself through your interactions
- Do no harm.

Share every student's

EMERGENCY FINANCIAL RELIEF

EMERGENCY FINANCIAL RELIEF



We know financial emergency relief is not a solution on its own but is so often vital in helping a person to lift their head out of the survival mode of that day and consider more clearly their options towards longer-term change going forward. Started in 2015, this program compliments our FSFP and is part of the broader wrap around support we provide.

Financial contributions are given to eligible people to financially aid support with bills and vouchers for those presenting in crisis, along with vital referral support across Brisbane North & West SA4 catchments.

Partnering with the Department of Social Services (DSS), Nexus Care was able to continue providing this

emergency relief to people in 2022. In the last year, 343 households were helped with over \$92,200 in combined support.

DSS funding contributes to both our Food and Financial ER programs and helped over 1100 households in 2022. We are grateful for this partnership.



CAREER COACHING SERVICES

Career Coaching Services (CC Services) empowers people in vulnerable situations by upskilling and collaborating on solutions to achieve sustainable employment outcomes. It is specifically designed and curated for people unable to access mainstream employment support or who need additional support. Career Coaching Services has grown to include:

1-on-1 Clinics

Regular coaching sessions that journey with participants towards their preferred career goal. A personalised strategy is created to upskill and build confidence in finding and securing a job.

Workplace English Classes

Practical English classes to help participants to become job-ready by practising verbal and written English skills in applying for jobs, interviewing, and working within an Australian workplace.

Job Clubs

Practical 1-on-1 support in job searching, writing job applications and preparing for interviews.

+ EXTRA CARE (silent arm, only shared internally)

Where possible and appropriate, Nexus Care will provide support to reduce non-vocational barriers to achieving employment outcomes for a participant.

Thanks again to donors, we can extend further support to people with costs of training or equipment that has a clear pathway to work (e.g. forklift licensing, training costs, purchase of a computer etc.)

Since starting in October 2020, 182 people from over 35 nations have entered the program, with 56.6% achieving an employment or study outcome.

1800+
Volunteered Hours

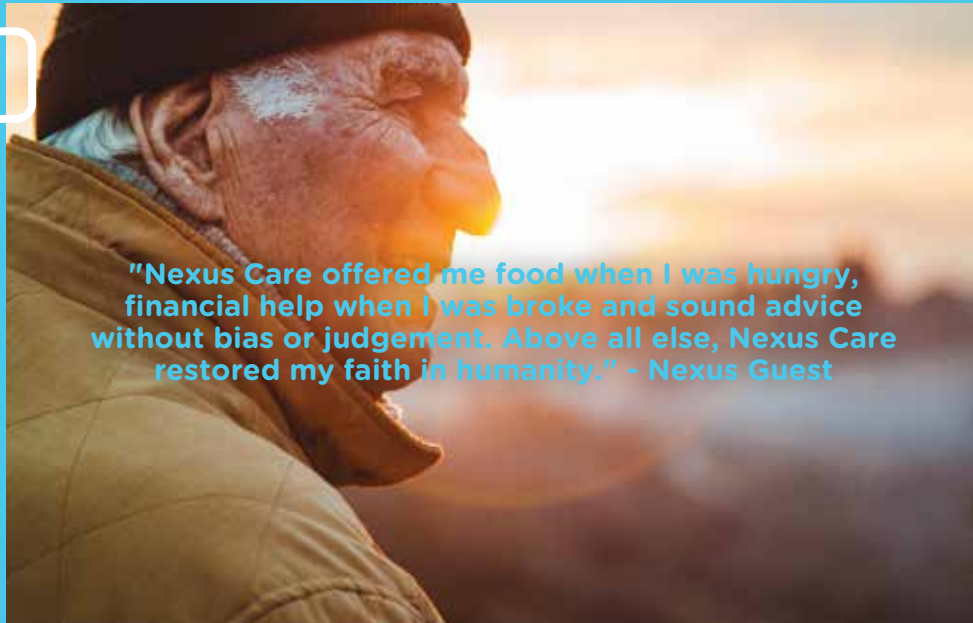
**525 MOMENTS
OF SUPPORT**

20
ENGLISH
CLASSES



TESTIMONIALS

"Hi, my friend and I received a care package the other day and I just wanted to call to say thank you. It will make a huge difference for Christmas this year with things getting tougher. We really appreciate the effort that your team put together for us. It was very special".
- Nexus Guest



"Nexus Care offered me food when I was hungry, financial help when I was broke and sound advice without bias or judgement. Above all else, Nexus Care restored my faith in humanity." - Nexus Guest

A Nexus guest had 3 separate resumes and none were current. She left us our Career Coaching Services with a new and complete CV and in 4 days she accepted a lecturer position at a private college in animation. She shared: "I only wanted 5 minutes for a quick connection and now I have a wonderful resume and a great job, thank you so so much. I am so excited, thank you."
- Nexus Guest



I find family in Nexus Care... I find real connection with their people.
- Nexus Guest



"You guys have been a God send. You listen, you don't have to listen but you do. I was in a dark place and your kindness made such a difference". - Nexus Guest

"I work with young people who are struggling with complex mental health concerns and generally are not well supported or face many barriers to becoming independent. Lately I have been introducing many new clients to the Nexus Care service and despite them feeling extremely nervous upon arrival, they will always leave struggling to believe how helpful and kind Nexus is as a whole."
- Referral Agency Support Worker

VOLUNTEERS

PEOPLE POWERED

Volunteers are vital to Nexus Care and enable the ongoing delivery of our programs.

Our amazing volunteers have helped with everything from collecting, sorting, and packing food for distribution, helping with school breakfast programs, being a friend to someone in tough situations, providing administrative support, delivering Christmas presents, supporting our fundraising appeals and SO MUCH MORE!

"To have the opportunity to love our guests unconditionally, help them along their job seeking journey and to do it alongside a wonderful group of fellow volunteers is both a privilege and a blessing. I truly enjoy volunteering!" Leanne - English Classes

"I like to see that peoples' lives can be changed and that they can be seen and heard and that we care, that they feel so validated and appreciated and I like to see that they can get back on their feet and that life is good and that there are moments to enjoy in life. I get the satisfaction of knowing that I've helped somebody and

that it's not for the money or the success or the fame, it's just that somebody's life is better, because we were in it." - Nicola - CC Services

It's just so wonderful to be a part of a group that can give back to the community. It's really nice, especially with Brekky Club, to be able to sow into the lives of the children by just a smile or a toastie. Lauren - Brekky Club

"I volunteer because when I was a child, someone volunteered and helped me out. It really changed my life. I feel that I need to now contribute back to help other people so that they can have a great life like I did." Lionel - Fresh Start

Look I think it says it in the name - Nexus cares. I care for the people. It's one of those little hidden gems that I found as coming to Nexus Church is that you can volunteer. I'm currently between jobs and I'm finding it so rewarding to be able to just help out people and to see the look on their face when you give them just a small package and say have a great day. It's such a blessing to me and to them." - Bill - Fresh Start

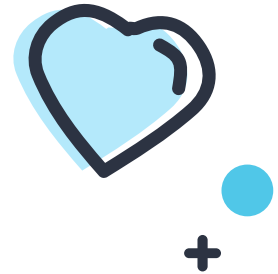
"I always look forward to serving on Tuesday mornings with our beautiful Nexus Care Team. There's something very special that happens when you hand a box of food to our guests. Those boxes that we get to prepare demonstrates more than meeting needs. It demonstrates the love of Jesus. How many loaves do you have? Jesus asked. Mark 8:5" Kelly - Fresh Start

"I absolutely love volunteering at Nexus Care. In fact it's the highlight of my week and the reason I love that is the people I get to meet, the people I get to serve and help. It just makes me go 'I feel like I'm fulfilling God's purposes', it's an opportunity to bless other people with God's love." Annie - Fresh Start

"It's lovely to do my part for our local community and share hope through fresh, healthy food and to be there with people and welcome them in their hard times. It's lovely to work with a team who are compassionate and willing to go the extra mile for people and to be part of the solution in our community" Bek - Fresh Start



GENEROSITY MAKES IT ALL POSSIBLE



WE COULD NOT DELIVER THE HIGH-QUALITY PROGRAMS AND SERVICES WITHOUT THE GENEROUS SUPPORT OF DONORS.

In June 2022 our major EOFY appeal kicked off with an added intention to raise awareness of the increasing demand on our programs and services. This was in light of increasing cost of living pressures and its significant impact on those in already vulnerable situations. Thanks to loyal and local donors, just over \$195,413 was raised- all of which is vital in funding the delivery of all we do.

In Dec 2022 we were grateful for the generosity of so many to our annual Christmas Appeal raising a little over \$35,261 towards our Christmas and Back to School initiatives.

We also saw the fourth running of our annual Charity Golf Day which was a great success with 60 players, 4 corporate sponsors, and \$15,529 raised.

Additionally, a big thank you to Transurban for their Flood Grant in March 2022 which helped Nexus Care directly support 111 families impacted by the flood.





LEADERSHIP AND MEMBERS

2022-2023

Management Committee Members

NATHAN BEAN (President)
B.Bus, Cert IV in Ministry, GCA (Biblical Studies)

CARL WOOD (Treasurer)
LLB, B.Bus (Accounting), M.Tax, Chartered Tax
Advisor

WARWICK SPACKMAN
BE(Hons)Civil, MIEAust, CPEng, RPEQ, NPER

ANNIE GIBNEY
BHealth Science, PGCert Business Admin &
Management, PGCert Counter Terrorism &
Intelligence

KELLY BARNES
BBus(HR/Mktg)

LES HANNAWAY
DipGraphic Design, CertIV Small Business
Management

Association Members

JOSHUA PLUMB (Secretary)
GRAHAM CORNEY
TIM BEAN
ALBERT BROWN
ERIC BRIZUELA
DAVINA BARTELS

OFFICIAL SUPPORTERS & STAFF

2022 OFFICIAL SUPPORTERS

In-Kind Supporters

WOOLWORTHS FLOCKTON ST
WOOLWORTHS CHERMSIDE WEST
WOOLWORTHS EVERTON PARK
WOOLWORTHS SKYGATE
OZHARVEST
ALDI KEPERRA
ALDI SANDGATE
BANNETON BAKERY, ASHGROVE
THE ALLEY CAFE
STAFFORD HEIGHTS STATE SCHOOL OSCH
SECONDBITE
COLES FERNY GROVE
NORTHWEST HOSPITAL
FOODBANK QUEENSLAND
BRISBANE PA NETWORK
NEXT STEPS KINDY
SHARE THE DIGNITY
+ ALL OUR WONDERFUL INDIVIDUAL & BUSINESS DONORS including ASF Group, Higgins Coatings, McGrath Estate Agents, Northside Christian College and 96.5FM

Grants

DEPARTMENT OF SOCIAL SERVICES
TRANSURBAN FLOOD GRANT

Our Staff Team

A BIG THANKS TO OUR STAFF TEAM

Our passionate staff at Nexus Care put their heart and soul into making sure Nexus Care is fulfilling our core mission - to alleviate poverty and distress in our local community - one person at a time.

NEXUS CARE STAFF TEAM WHO WORKED WITH US IN 2022

Alex Ziemek, Anita Henderson, Crystelle Hall, Jo Grice, Josh Plumb, Kelcey Beak, Narelle Vautier, Perrin O'Dea, Rebekah Bain, Sarah Somerville, Suki O'Dea, Sue Mihailou

Your dedication and service over the last 12 months has been tremendous.





Nexus Care is a proud initiative of Nexus Church.
Everton Park: 151 Flockton Street, Everton Park Qld 4053
Sandgate: 37 Brighton Road Sandgate Qld 4017
ABN: 68621211486

www.nexuscare.com.au